

CERTIFICATE OF LOCATION OF GOVERNMENT CORNER

NORTH QUARTER Corner of Section 29, Township 107N, Range 40W

5th Principal Meridian, State of Minnesota, County of Murray.

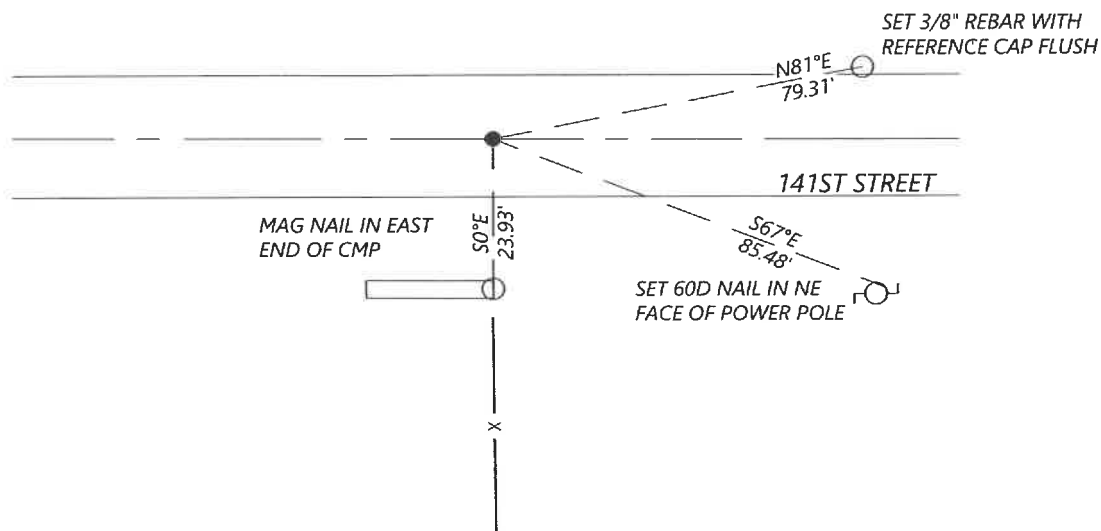
At the corner location shown on the sketch:

☒ On 11/06/2021 found a 7" DIAMETER CONCRETE MONUMENT WITH CHISELED "X" 1.3' BELOW ROAD SURFACE.
DATE

☒ left monument as found ☐ lowered monument ☐ removed monument (explain)

☒ On 11/06/2021 placed a 3/8" REBAR ON THE SOUTH FACE OF CONCRETE MONUMENT AS AN ACCESSORY TO THE
DATE
MONUMENT.

SKETCH OF REFERENCE TIES



Statement of evidence for this corner location is on back of this page.

I hereby certify that this document was researched and prepared by me or under my direct supervision and that I am a licensed Land Surveyor under the laws of the State of Minnesota.

Signature [Signature]

Date 4-18-2022 License No. 57085

Title:

☒ Land Surveyor ☐ Professional Engineer
☐ County Surveyor ☐ County Engineer

OFFICE OF THE COUNTY RECORDER

County of Murray

I hereby certify that this document was filed in the Co.

Recorder's office at _____ M. on the
22nd day of April A.D. 20 22

County Recorder [Signature]
by _____, Deputy

DOCUMENT NO. _____

SETH WECKMAN
Minnesota License No. 57085

Statement of Evidence:

North Quarter corner of Section 29 Township 107 North, Range 40 West, 5th Principal Meridian, Murray County, Minnesota.

1861 Lewis Brockman, U.S. Deputy Surveyor, set a post in mound.

Undated Unknown, survey in Section 29 states 3 small stones were found.

2012 Zieske Land Surveying, Perry Zieske (LS 23308), filed a corner certificate and states that he found a concrete monument with "x", 1.8ft deep. Set a 5/8" iron stake with survey cap "23008" over the top center of concrete monument.

2021 Westwood Professional Services searched the area and found a 7" concrete monument w/ chiseled "x", 1.3ft below the road surface. The found monument is on the East/West road centerline and +/- 5ft East of the fence line projected South. The 5/8" rebar that Zieske set over the top of the monument was not recovered and no reference ties were found at the corner location. Accepting the concrete monument as the corner location and set a 3/8" rebar on the South side of the concrete monument as an accessory. Established 3 local reference ties.

Analysis of the recovered data, field evidence and survey measurements, indicates that the monument found is the correct perpetuation of this corner. For additional information concerning this corner please contact Westwood Professional Services.